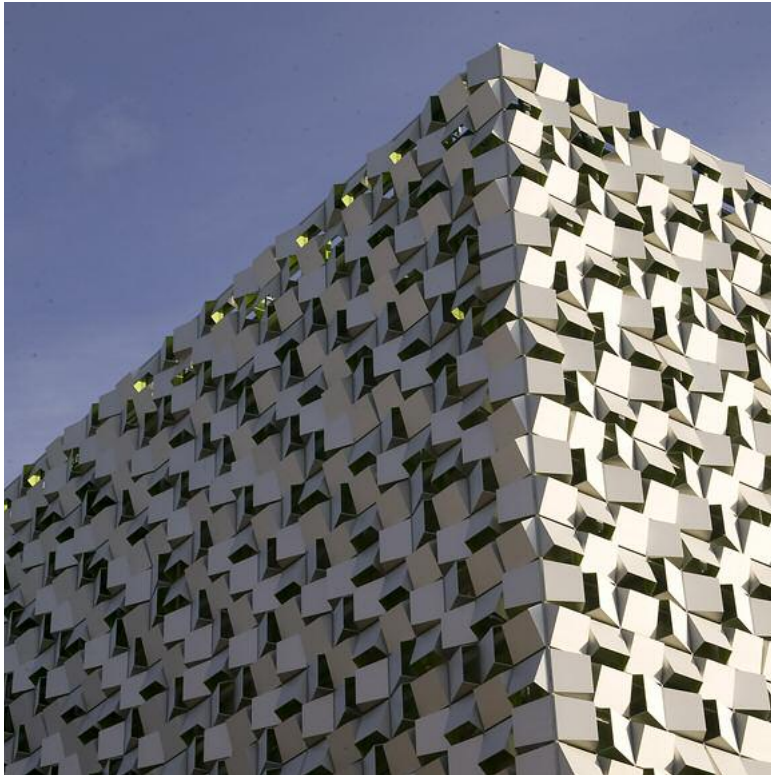


St Paul's Place Sheffield

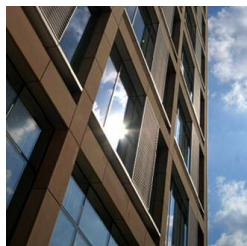
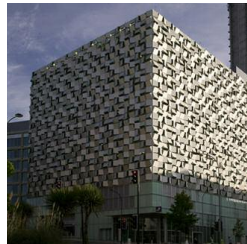


St Paul's Place is a key element in the transformation of Sheffield City Centre. The development has seen the creation of a new prime pitch for offices and complements this with an exciting mix of cultural, retail, residential and restaurant uses to create a new part of the city. The offices adjoin The Millennium Galleries and The Winter Gardens and overlook The Peace Gardens next to the Town Hall. The masterplan integrates these buildings around a new square, St Paul's Place, and includes a 32 storey residential tower and the award winning 'Cheese Grater' car park. The scheme has been developed by CTP St James, one of our joint venture companies working in partnership with Sheffield City Council and Creative Sheffield. The residential element of the scheme has been delivered by City Lofts.

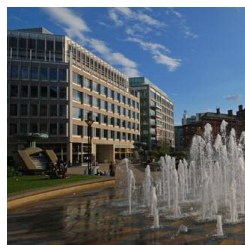
No.1 St Paul's Place, 7,200 m² offices and 1,000 m² ground floor retailing, was completed in 2005. No.2 St Paul's Place, also 7,200 m², was completed in 2009, as was the 520 space multi-storey car park.

For more information:
www.stpaulsplace.co.uk

Contact letting agent:
peter.whiteley@knightfrank.com



Now
letting



St James Securities Ltd
4th Floor Bridgewater Place
Water Lane
Leeds LS11 5BZ

Telephone: 0113 245 8855
Facsimile: 0113 245 8844
Website: www.sjs.co.uk